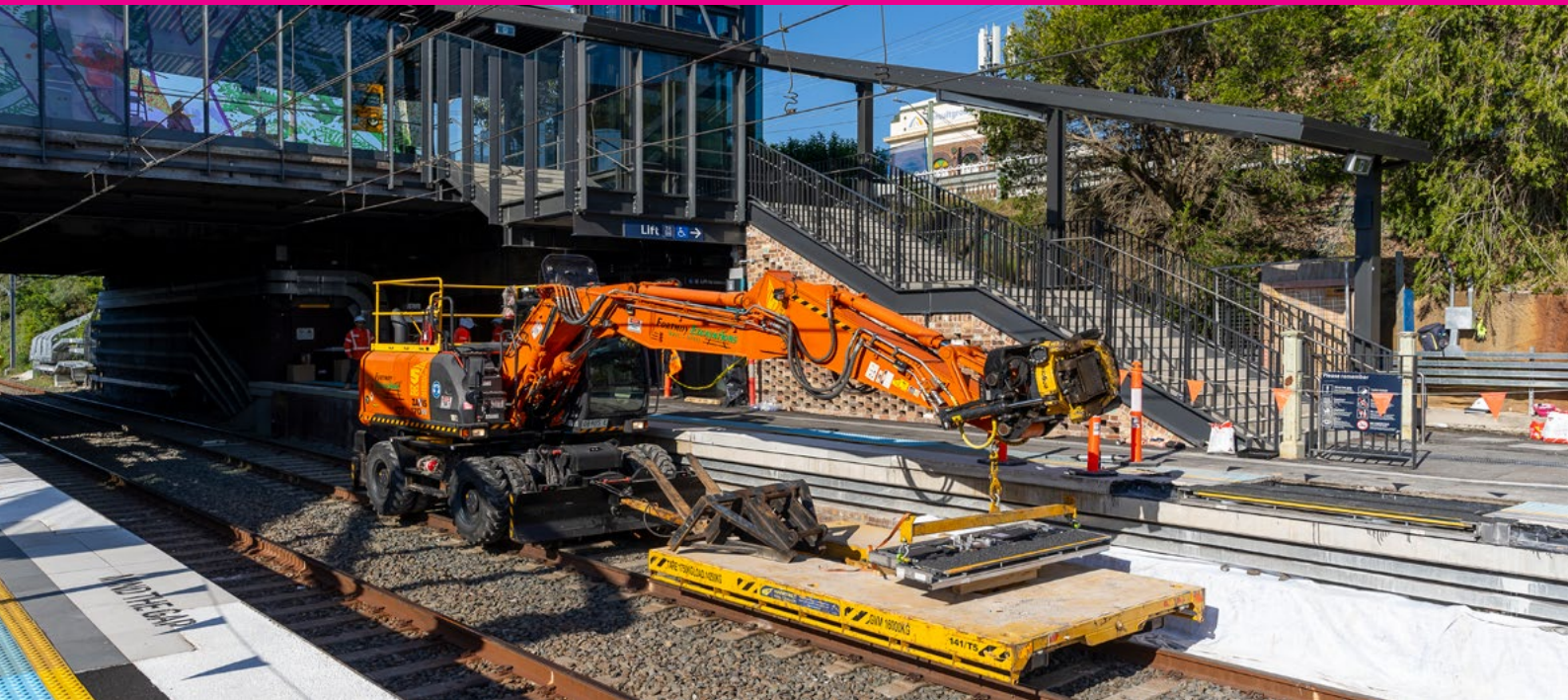




Upgrade of the Sydenham to Bankstown train line

Southwest Link train replacement bus services



What is Southwest Link?

Southwest Link is a dedicated, high-frequency bus service between Sydenham and Bankstown train stations to ensure passengers can continue to travel during the final conversion period of the T3 Bankstown Line.

Key features of Southwest Link include:

- three dedicated bus routes
- frequent services every day from early in the morning until late at night, with a bus every two to four minutes in peak periods across some routes
- a mix of all stops and limited stops services.

Southwest Link forms part of an integrated transport plan.

What is the integrated transport plan?

The integrated transport plan is all the alternate transport options available to passengers to help get where they need to go during the T3 Bankstown Line conversion works.

Passengers can choose from:

- Southwest Link buses
- turn-up-and-go metro services at Sydenham
- local buses
- trains
- light rail
- cycling and walking routes.

When does Southwest Link start and how long will it operate?

Southwest Link buses will start between July and October 2024 and will operate for up to 12 months.

Will Southwest Link services be accessible?

Yes. Accessible, low-floor buses will be used across Southwest Link bus routes.

Will my journey time increase during the upgrade?

Yes. Allow extra travel time to complete your journey between Sydenham and Bankstown during the upgrade. You'll be able to plan Southwest Link bus trips, as well as explore alternate transport options, ahead of services starting.

Why is the T3 Bankstown Line between Sydenham to Bankstown being upgraded?

The T3 Bankstown Line between Sydenham to Bankstown is being upgraded to metro standards to enable rapid metro passenger services from 2025.

Final upgrade work can only begin once Sydney Trains services stop running. This includes works to separate Sydney Trains and metro services at Bankstown Station, complete station upgrades, install platform screen doors, overhead wiring, final track alignment work, train testing and commissioning activities.

Sydney Metro will operate as a turn-up-and-go service, with trains running every four minutes during peak hours – that's 15 trains per hour. Over the three-hour morning peak, Sydney Metro will be able to move 51,000 people in each direction between Bankstown to the Sydney CBD - an extra 15,000 people more than now.



Upgrade of the Sydenham to Bankstown train line Southwest Link train replacement bus services

Will there be parking changes during Southwest Link?

Yes. Parking arrangements are required to change near impacted train stations to allow buses to operate efficiently across the 12 month final conversion period.

Transport for NSW will consult with the community about proposed parking changes in mid-2024.

Will there be increased traffic congestion during the final conversion period?

The road network across suburbs between Sydenham and Bankstown currently experiences traffic congestion, particularly during peak periods. We are working closely with the community, businesses and local government to help manage congestion.

Transport for NSW will implement active corridor management approaches to optimise the flow of traffic during this temporary disruption. This includes traffic-light optimisation at busy intersections and the use of tow-trucks on key corridors including Canterbury Road.

Tickets on train replacement buses



You will need a valid Opal card, American Express, Mastercard or Visa card to pay for travel on the train replacement buses by tapping on and tapping off at the Opal readers.



Plan ahead and purchase your Opal card online or from an Opal retailer.

What are the changes for train stations west of Bankstown?

A new timetable will be introduced that will ensure passengers west of Bankstown continue to have access to train services.

T3 Liverpool & Inner West Line

Train services currently operating between Liverpool and the City Circle via Bankstown will instead run to the Sydney CBD via Regents Park and Lidcombe on the new T3 Liverpool & Inner West Line. This maintains a direct service to the Sydney CBD from Berala, Regents Park, Carramar, Villawood, Leightonfield, Chester Hill and Sefton.

New T6 Lidcombe & Bankstown Line

A new train service will be introduced between Lidcombe and Bankstown. Passengers will be able to interchange between the new T6 Lidcombe & Bankstown Line and T3 Liverpool & Inner West Line at Regents Park to access services to the Sydney CBD, Liverpool or Bankstown.

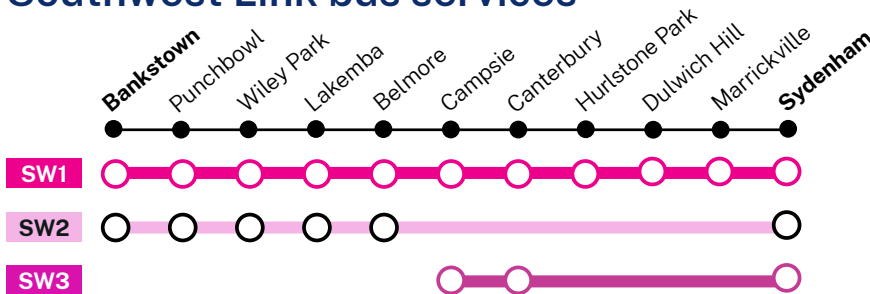
Train replacement buses

At times during the final conversion period, buses will replace trains on the T6 Line between Lidcombe & Bankstown to allow for track upgrades and maintenance activities.

What are the changes for Erskineville and St Peters passengers?

Erskineville and St Peters passengers will continue to receive direct services to and from the Sydney CBD on the T8 Airport & South Line.

Southwest Link bus services



Southwest Link bus service frequency



Every 2 to 4 minutes
during peak periods



At least every 10 minutes
across most of the day



At least every 15 minutes
late at night

How can I stay informed?

To stay informed and receive timely updates regarding Southwest Link and other suitable transport options during the upgrade, visit transportnsw.info/southwestlink



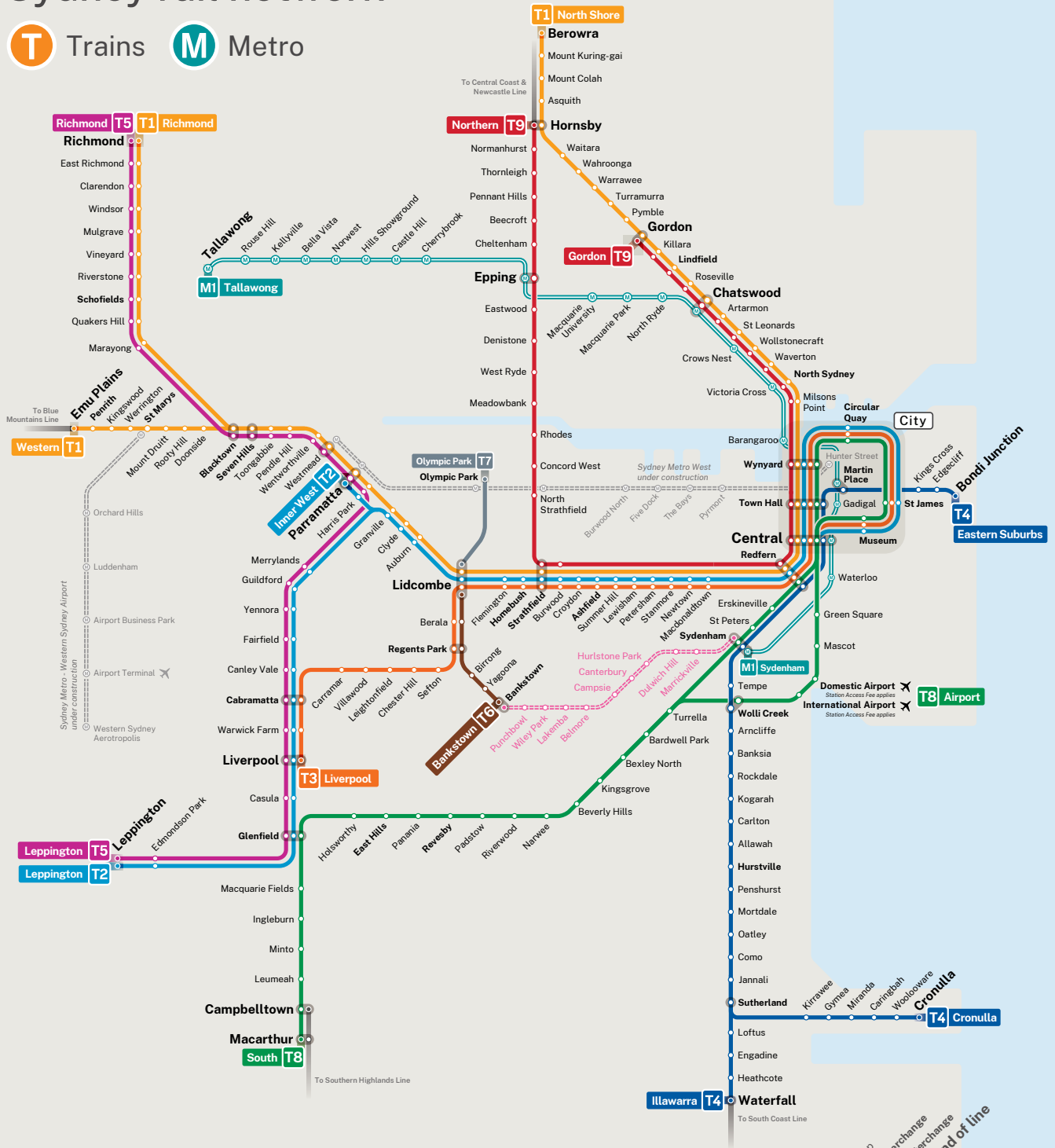
Making way for Sydney Metro



Upgrade of the Sydenham to Bankstown train line Southwest Link train replacement bus services

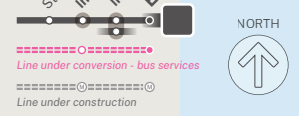
Sydney rail network

T Trains **M** Metro



Sydney train and metro lines

- | | | | | |
|--|--|--|--|--|
| T1 North Shore & Western Line
North Shore
Western
Richmond | T2 Leppington & Inner West Line
Inner West
Leppington
City | T3 Liverpool & Inner West Line
Liverpool
City | T4 Eastern Suburbs & Illawarra Line
Eastern Suburbs
Illawarra
Cronulla | T5 Cumberland Line
Leppington
Richmond |
| T6 Lidcombe & Bankstown Line
Lidcombe
Bankstown | T7 Olympic Park Line
Olympic Park
Lidcombe | T8 Airport & South Line
Airport
South
City | T9 Northern Line
Northern
Gordon | M1 Metro North West & Bankstown Line
Sydenham
Tallawong |



Check timetables and trip planners for train services and connections

Visit transportnsw.info



Making way for Sydney Metro